

Kansas Agricultural Experiment Station Research Reports

Volume 2
Issue 3 *Southeast Agricultural Research Center
Reports*

Article 20

January 2016

Annual Summary of Weather Data for Parsons

M. Knapp

Kansas State University, Manhattan, mknapp@ksu.edu

Follow this and additional works at: <https://newprairiepress.org/kaesrr>



Part of the [Agronomy and Crop Sciences Commons](#), and the [Climate Commons](#)

Recommended Citation

Knapp, M. (2016) "Annual Summary of Weather Data for Parsons," *Kansas Agricultural Experiment Station Research Reports*: Vol. 2: Iss. 3. <https://doi.org/10.4148/2378-5977.1205>

This report is brought to you for free and open access by New Prairie Press. It has been accepted for inclusion in Kansas Agricultural Experiment Station Research Reports by an authorized administrator of New Prairie Press. Copyright January 2016 Kansas State University Agricultural Experiment Station and Cooperative Extension Service. Contents of this publication may be freely reproduced for educational purposes. All other rights reserved. Brand names appearing in this publication are for product identification purposes only. No endorsement is intended, nor is criticism implied of similar products not mentioned. K-State Research and Extension is an equal opportunity provider and employer.



Annual Summary of Weather Data for Parsons

Abstract

Weather Data for Parsons, Kansas, 2015.

Keywords

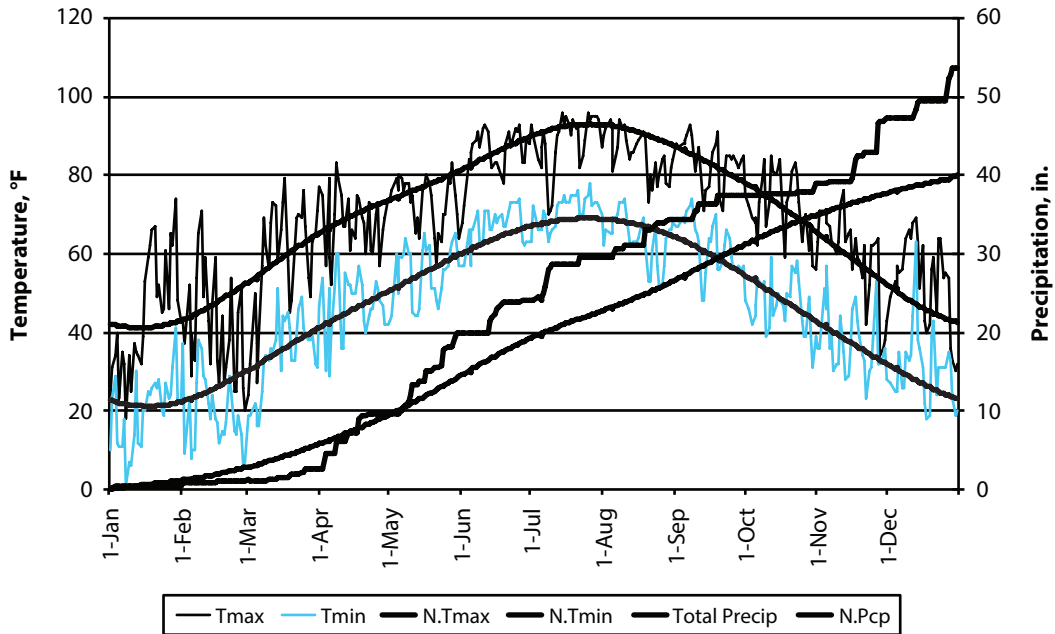
weather

Creative Commons License



This work is licensed under a [Creative Commons Attribution 4.0 License](https://creativecommons.org/licenses/by/4.0/).

Annual Summary of Weather Data for Parsons



2016 SEARC AGRICULTURAL RESEARCH

2015 Data

	Jan	Feb	Mar	Apr	May	Jun	Jul	Aug	Sep	Oct	Nov	Dec	Annual
Avg. max	44.2	41.4	58.3	68.5	73.1	85.7	88.8	85.5	83.7	72.2	60.2	52.8	67.9
Avg. min	20.1	19.3	34.2	47.2	55.2	66.9	71.0	64.1	62.3	47.0	37.333	30.7	46.3
Avg. mean	32.1	30.4	46.3	57.9	64.1	76.3	79.9	74.8	73.0	59.6	48.8	41.7	57.1
Precip	0.47	0.62	1.70	7.0	10.41	4.18	5.5	4.76	2.99	1.57	8.2	6.43	53.78
Snow	0.0	2.5	4.0	0.0	0.0	0.0	0.0	0.0	0.0	0.0	0	2.0	8.5
Heat DD*	1019	970	581	226	96	3	0	2	9	193	487	722	4307
Cool DD*	0	0	0	12	69	342	463	306	249	25	0	1	1465
Rain days	5	4	9	13	15	9	12	11	3	6	10	7	104
Min < 10	3	4	0	0	0	0	0	0	0	0	0	0	7
Min < 32	30	25	9	2	0	0	0	0	0	1	6	19	92
Max > 90	0	0	0	0	0	8	16	7	2	0	0	0	33

Normal values (1981-2010)

	Jan	Feb	Mar	Apr	May	Jun	Jul	Aug	Sep	Oct	Nov	Dec	Annual
Avg. max	42.0	47.6	57.1	67.1	75.7	84.4	90.0	90.3	81.3	69.6	56.6	44.2	67.2
Avg. min	21.8	26.0	35.0	44.5	55.0	64.1	68.5	66.6	57.6	45.5	35.3	24.6	45.5
Avg. mean	31.9	36.8	46.1	55.8	65.3	74.2	79.3	78.5	69.4	57.6	46	34.4	56.4
Precip	1.41	1.77	3.19	4.38	5.93	5.53	3.92	3.29	4.69	3.86	2.94	2.06	42.97
Snow	2.8	1.7	1.2	0.0	0.0	0.0	0.0	0.0	0.0	0.0	0.3	2.7	8.7
Heat DD	1026	790	590	299	85	8	1	1	52	260	574	948	4632
Cool DD	0	0	2	23	96	285	442	418	186	29	2	0	1483

Departure from normal

	Jan	Feb	Mar	Apr	May	Jun	Jul	Aug	Sep	Oct	Nov	Dec	Annual
Avg. max	2.2	-6.2	1.2	1.4	-2.6	1.3	-1.2	-4.8	2.4	2.6	3.6	8.6	0.7
Avg. min	-1.7	-6.7	-0.8	2.7	0.2	2.8	2.5	-2.5	4.7	1.5	2.0	6.1	0.9
Avg. mean	0.2	-6.4	0.2	2.1	-1.2	2.1	0.6	-3.7	3.6	2.0	2.8	7.3	0.8
Precip	-0.94	-1.15	-1.49	2.57	4.48	-1.35	1.58	1.47	-1.7	-2.29	5.26	4.37	10.81
Snow	-2.8	0.8	2.8	0.0	0.0	0.0	0.0	0.0	0.0	0.0	-0.3	-0.7	-0.2
Heat DD	-8	180	-9	-73	11	-5	-1	1	-43	-68	-87	-226	-327
Cool DD	0	0	-2	-12	-28	57	21	-112	63	-4	-2	1	-18

* Daily values were computed from mean temperatures. Each degree that a day's mean is below (or above) 65 °F is counted for one heating (or cooling) degree day.

Last Spring Freeze: 29 °F on 5-Apr

First Fall Freeze: 31 °F on 30-Oct

Length of growing season: 208 days

Highest temperature: 96 °F on 14-Jul and 25-Jul

Lowest Temperature: 1 °F on 8-Jan

Greatest daily rainfall: 3.65 inches on 27-Nov