

1-1-2015

Table of Contents and Prologue

Jay Chenault
Kansas State University

Lauren Harness
Kansas State University

Follow this and additional works at: <http://newprairiepress.org/oz>

 Part of the [Architecture Commons](#)



This work is licensed under a [Creative Commons Attribution-Noncommercial-No Derivative Works 4.0 License](#).

Recommended Citation

Chenault, Jay and Harness, Lauren (2015) "Table of Contents and Prologue," *Oz*: Vol. 37. <https://doi.org/10.4148/2378-5853.1539>

This Front Matter is brought to you for free and open access by New Prairie Press. It has been accepted for inclusion in *Oz* by an authorized administrator of New Prairie Press. For more information, please contact cads@k-state.edu.

OZ

Volume 37, 2015

Contents

Editors

James Chenault
Lauren Harness

Staff

Madeline Appel
Aaron Bolli
Frederik Heuser
Becka Liu
Ethan Merritt
Ben Slater
Derek Smith
Dain Susman
Sam Wilson

Faculty Advisors

Christopher Fein
Raymond Streeter

Cover

Anne Lindberg
drawn pink, 2012
Bemis Center for Contemporary Art,
Omaha, Nebraska

Oz is a nonprofit journal edited,
designed, and produced annually
by students in the Kansas State
University College of Architecture,
Planning, and Design. Please address
inquiries to:

Managing Editor, *Oz*
Seaton Hall
Manhattan, Kansas 66506-2901

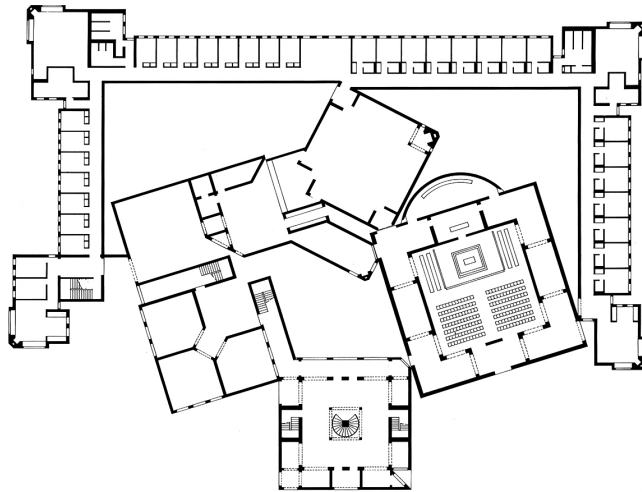
www.ozjournal.org

ISSN 0888-7802
Copyright © 2015 *Oz*

Printed by Consolidated Printing,
Salina, Kansas

4	The Present Situation	David Buege and Marlon Blackwell
10	Then and Now The Context of Continuity	Joseph Biondo and <i>Dan Silberman</i> Spillman Farmer Architects
20	Drawing in Space	Anne Lindberg
28	Context as Continuum	Adam Yarinsky Architectural Research Office
38	Local Code Real Estates	Nicholas de Monchaux
46	Within and Among	Brad Cloepfil Allied Works Architecture
52	Sugar Hill Project Harlem, New York	David Adjaye Adjaye Associates
60	The Deep Section Karst Urbanism in Town Branch Commons	Kate Orff, Gena Wirth, and Anne Weber SCAPE/Landscape Architecture
70	Honoring Place, Detail, and Intent A Case Study	Lake Flato Architects

Prologue



Context

As architects we must both be a part of and stand apart from the culture within we operate. To be effective we must embrace power, but also distance ourselves; we must engage in dialogue and we must refuse to listen; we must explore the familiar and the unfamiliar; we must embrace history and reject it. Finally we must resolve our ideas in matter and form.

—David Chipperfield

Decisions cannot be made in isolation. *Oz*, Volume 37, addresses the implications of context in architecture.

Responding to context allows buildings to convey values of society and serve as a reflection of time and place. This process originates from a spectrum of influences, not always tangible.

Oz 37 asks, “what is the role of context in your conception of architecture?”